

Geometry G
1.1 - 1.2 Quiz Homework

Name: Key
Date: _____ Period: _____

Directions: For 1 - 4, solve for the given variable(s).

2pts each

$$1) 7x - 9 = 19$$

$$\begin{array}{r} +9 \quad +9 \\ \hline 7x = 28 \\ \hline \frac{7}{7} \quad \frac{7}{7} \\ \hline x = 4 \end{array}$$

$$2) \frac{3[2(13 - 9) + 8] + 2}{5 \cdot 5}$$

$$\begin{array}{r} 3[2(4) + 8] + 2 \\ \hline 25 \end{array} \quad \begin{array}{r} 48 + 2 \\ \hline 25 \end{array}$$

$$\begin{array}{r} 3[16] + 2 \\ \hline 25 \end{array} \quad \begin{array}{r} 50 \\ \hline 25 \end{array}$$

1) x = 4
2) 2

3) $x^2 + x - 12 = 0$

$$(x + 4)(x - 3) = 0$$

$$\begin{array}{r} x + 4 = 0 \quad x - 3 = 0 \\ -4 \quad -4 \quad +3 \quad +3 \\ \hline x = -4 \quad x = 3 \end{array}$$

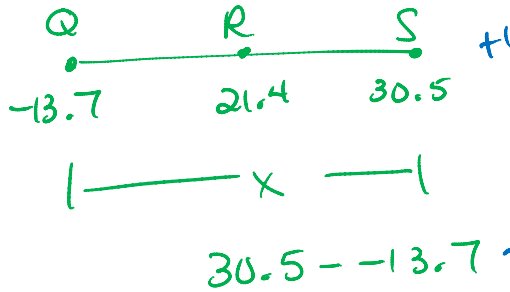
4) $y = 2x - 9$
 $2x + y = 7$

$$2x + 2x - 9 = 7$$

$$\begin{array}{r} 4x - 9 = 7 \\ +9 \quad +9 \\ \hline 4x = 16 \\ \hline \frac{4}{4} \quad \frac{4}{4} \\ \hline x = 4 \end{array}$$

3) x = -4 or 3
4) x = 4

(+8)



+1
Answer