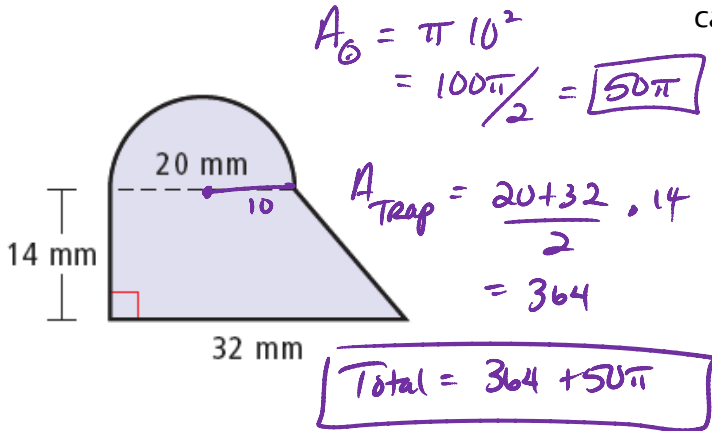


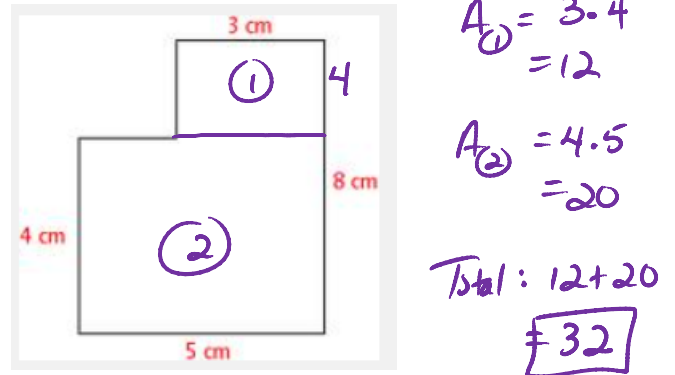
10.3 Composite Figures

Part 1: A Composition is made up of simple shapes, such as triangles, rectangles, trapezoids, and circles. To find the area of a composite figure, find the areas of the simple shapes and then add to find the total area.

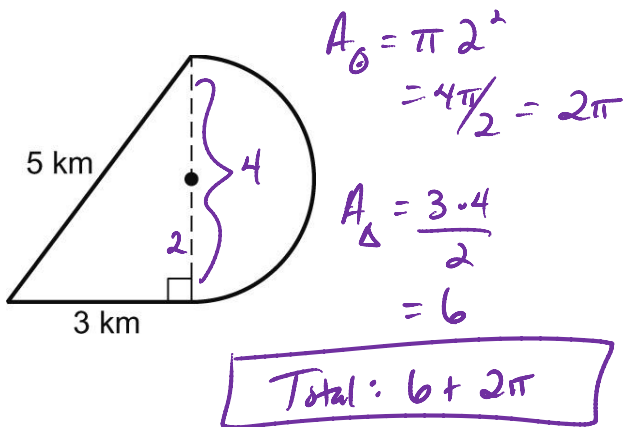
Example 1:
Find the area of the shaded region below.



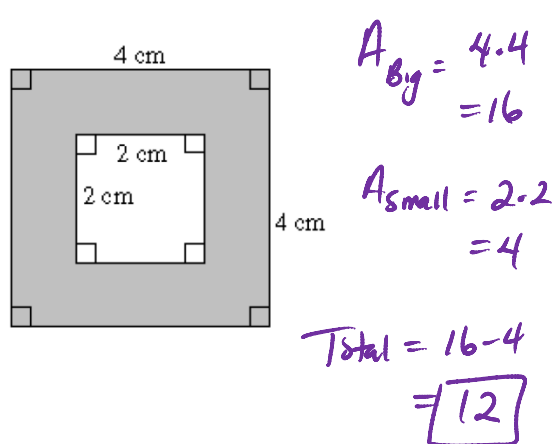
Example 2: The image below represents a room in a House that a family wants to carpet. How many ft² of carpet would they need?



Example 3: Find the area of the figure.



Example 4: Find the area of the shaded region.



Part 2: Areas of Irregular Shaped Figures

For STRANGE shapes in a coordinate plane: Find the total area by counting the number of grid squares that are entirely within the figure and the number of squares which have about half of the area inside the figure.

Example 3: Use a composite figure to estimate the shaded area.
The grid has squares with a side length of 1 ft.

$5\frac{1}{2}$

