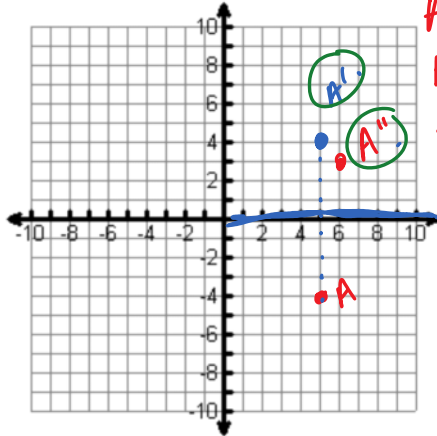


Post-Assessment

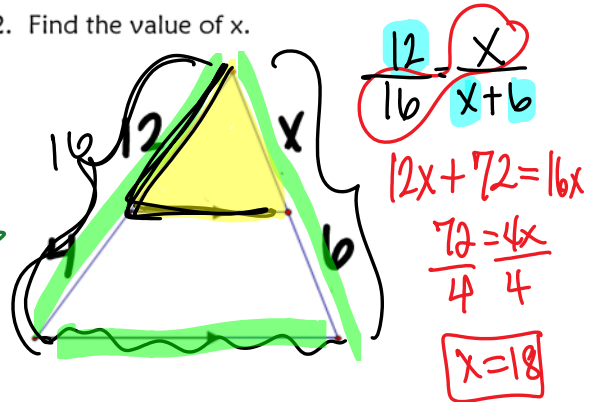
Name:

Chapter 7 and 9 Post-Assessment

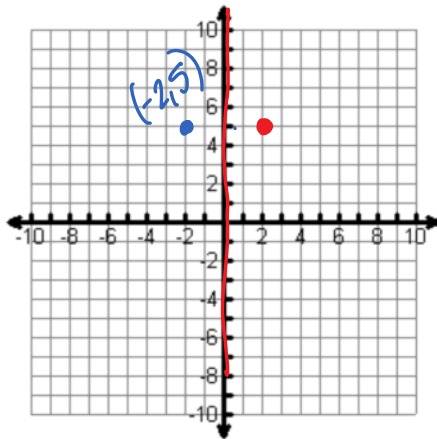
1. The point A(5, -4) is mapped to point A''(6, 3) first by a reflection over the x-axis and then by a translation of what vector?
2. Find the value of x.



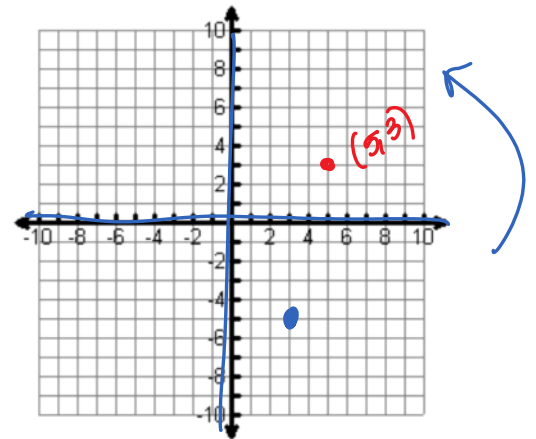
1st
3rd
A right 1
A' down 1
A'' $\langle 1, -1 \rangle$



3. Reflect the point (2, 5) over the y-axis.



4. Rotate (3, -5) 90° (counterclockwise) origin.



5. Find the measure of sum of the interior angles of a regular convex octagon

$(n-2) \cdot 180$
 $(8-2) \cdot 180$
 1080

6. Given the diagram below as marked, find PR.

