

Name: **key**

CHAPTER 8
POST-ASSESSMENT

1. Graph the following and answer the questions:

$y = x^2 - 10x + 21$ **$(x-7)(x-3)$**

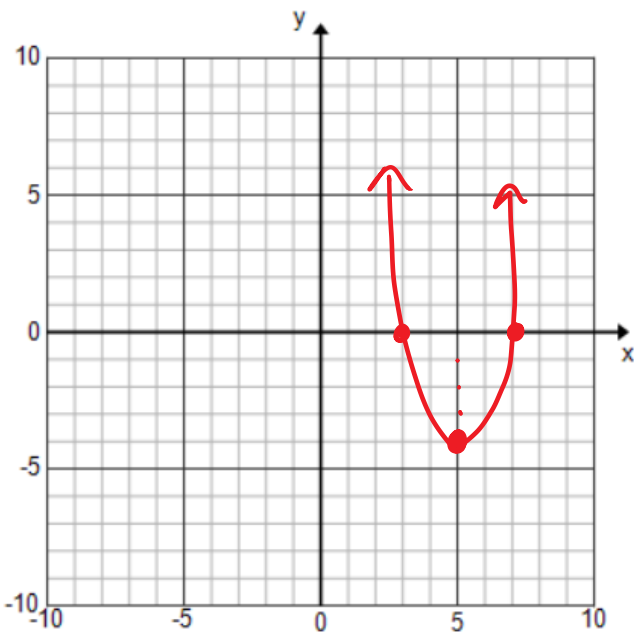
Opens Up or Down? **up**

Max or Min? **Min**

y-intercept? **$(0, 21)$** **$\frac{10}{2} = 5$**

Vertex? **$(5, -4)$** **$(5)^2 = 50 + 21$**
 $-25 + 21$

x-intercepts: **$(7, 0)$** and **$(3, 0)$**



2. Use the Graphing Calculator to find the x-intercepts:

$y = -3x^2 + 4x - 10$

No solution

Name:

CHAPTER 8
POST-ASSESSMENT

1. Graph the following and answer the questions:

$y = x^2 - 10x + 21$

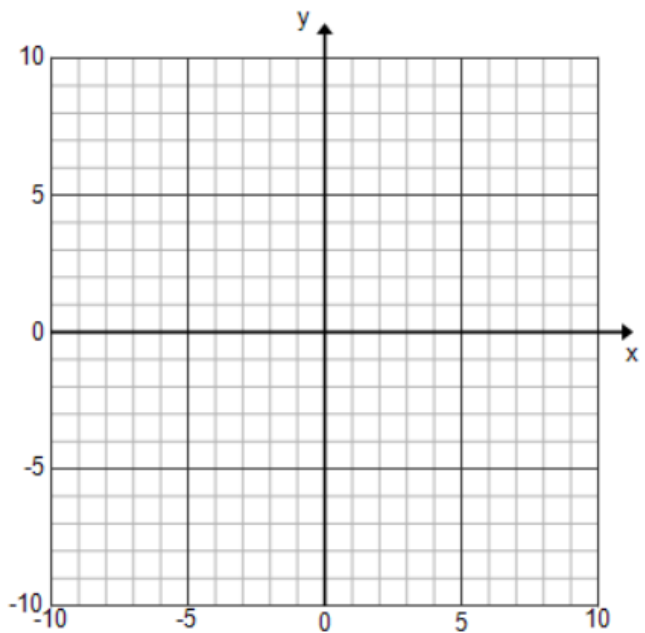
Opens Up or Down? _____

Max or Min? _____

y-intercept? _____

Vertex? _____

x-intercepts: _____ and _____



2. Use the Graphing Calculator to find the x-intercepts:

$y = -3x^2 + 4x - 10$