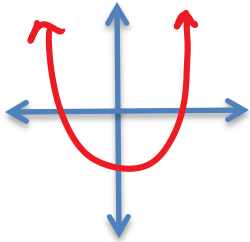


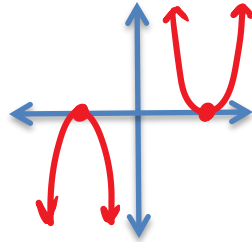
Sketch the following:

A quadratic equation with ...

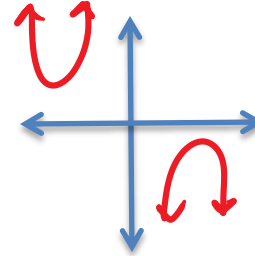
2 solutions



1 solution



0 solutions



Find the discriminant of the equation, state how many solutions, and sketch the graph.

$x^2 = 5 - 4x$ $x^2 + 4x - 5 = 0$

Discriminant:

$$(4)^2 + -4(1)(-5)$$
$$16 + 20$$
$$36$$

Solutions: 2

$x^2 + 5x = -10$ $x^2 + 5x + 10 = 0$

Discriminant:

$$(5)^2 + -4(1)(10)$$
$$25 + -40$$
$$-15$$

Solutions: 0

$x^2 - 6x = -9$ $x^2 - 6x + 9 = 0$

Discriminant:

$$(-6)^2 + -4(1)(9)$$
$$36 - 36$$

Solutions: 1

