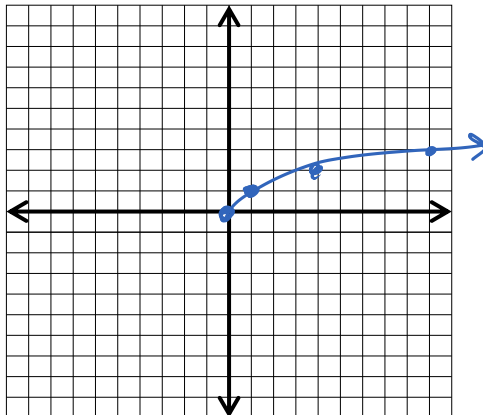


# GRAPHING THE SQUARE ROOT FUNCTION With Transformations



The Parent Function:  $y = \sqrt{x}$

x	y
-4	-
-1	-
0	0
1	1
4	2
9	3



## Key Features

Domain:  $[0, \infty)$

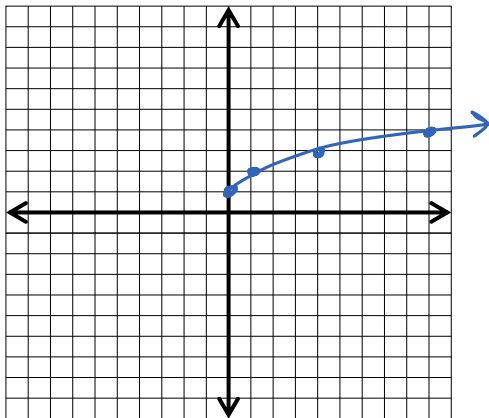
Range:  $[0, \infty)$

## Let's Practice ... Graphing with TRANSFORMATIONS

(#1-4) Identify the transformations taking place on the parent function. Then, graph the transformed function. Include at least four accurate points.

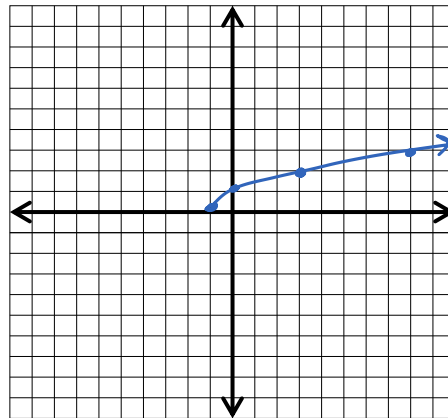
1.  $y = \sqrt{x+1}$

$\uparrow 1$



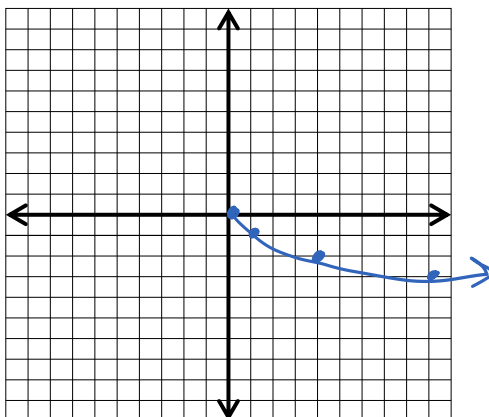
2.  $y = \sqrt{x+1}$

$\leftarrow 1$



3.  $y = -\sqrt{x}$

reflect over  
x-axis



4.  $y = \sqrt{-x}$

reflect over  
y-axis

